

Cecilia School-Based Health Center

**667-6226 ext. 50

**located at 1021 School St. (Cecilia Junior High)

**opened August 1993

Students that attend the following schools go to CSBHC:

*Cecilia Primary School

*Teche Elementary School

***Cecilia Junior High School* (host campus)**

*Cecilia Senior High School

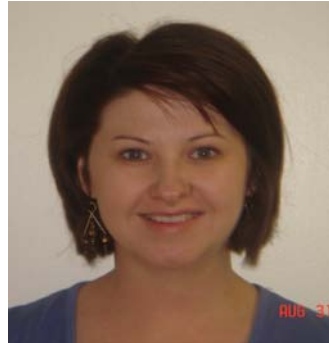
CSBHC Staff:



Ann Berard

Medicaid Specialist

Ext. 1661



Tiffany Bertrand, RN

Nurse

Ext. 1662



Katie Valentour, GSW

Social Worker

Ext. 1664



Jody West, LCSW

Coordinator

332-2844 Ext. 1264



Susan Thibodeaux, RN

School Nurse

Ext. 1663



John Daigre, MD

Medical Doctor



Ji Angelle, Gwen Duplechien, Sarah Goodie

Bus Driver/Clerical



Go Bulldogs!!